

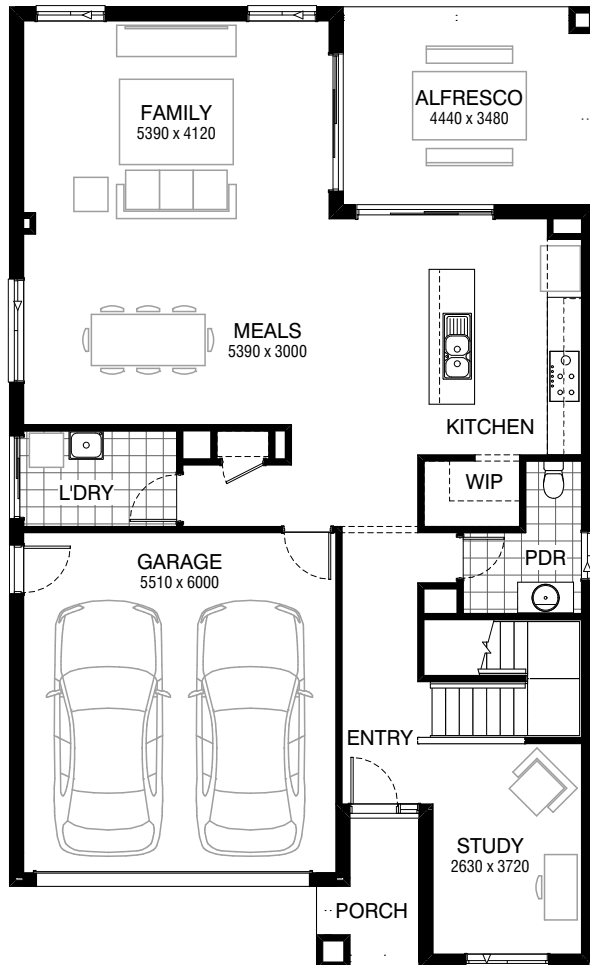
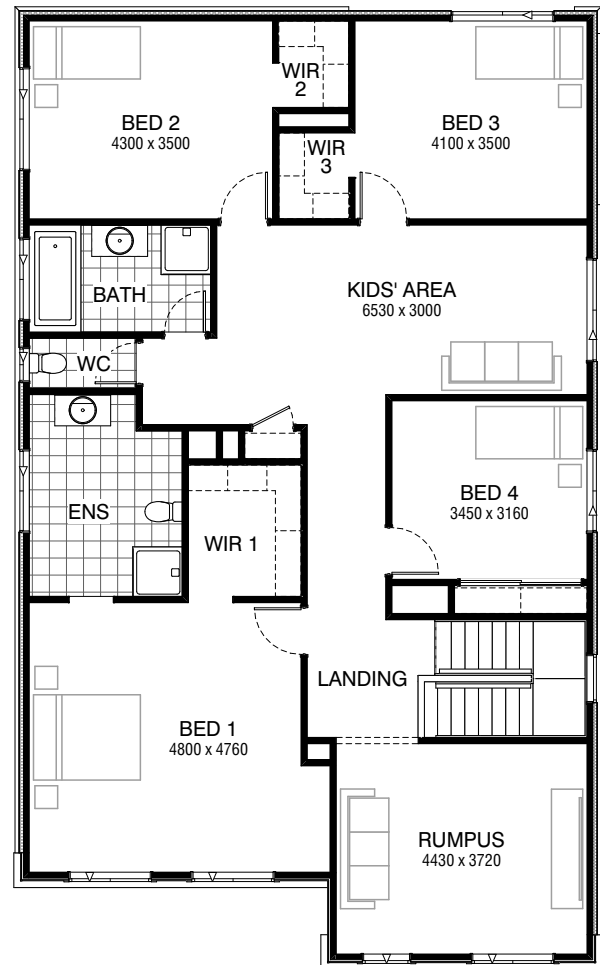


Total squares **35.0sq**

 **4**  **2.5**  **2**



GROUND FLOOR



FIRST FLOOR

FLOORPLAN OPTIONS

All available ready-to-go floorplan options for this design can be viewed on the following pages, or visit www.burbank.com.au.

Facades available:

Condor, Matisse, Monet, Aqua	
Hester, Metropolitan, Orana	
Rainforest	
Overall home width	10.31m
Overall home length	16.91m

Residence	269.5m ²	29.0sq
Garage	36.1m ²	3.9sq
Porch	4.0m ²	0.4sq
Alfresco	15.5m ²	1.7sq
Total	325.1m²	35.0sq

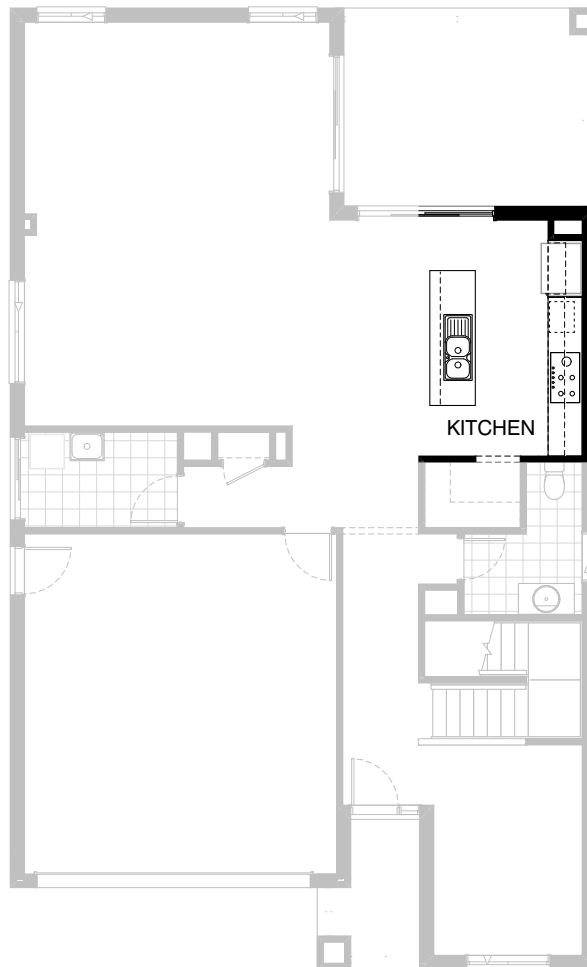
Listed details based on Condor façade floorplan (illustrated)

*Copyright conditions. All photos and illustrations are representative only. Floor plans and specifications may be varied by Burbank without notice, the dimensions are diagrammatic only and a Building Contract with final drawings will display correct dimensions and detail. All designs are the property of Burbank and must not be used, reproduced, copied or varied, wholly or in part without written permission from an authorised Burbank representative. Copyright Burbank Australia Pty Ltd. ABN 91 007 099 872. Builders Registration Number CDB-U-52603.

Call 13 BURBANK
Visit burbank.com.au

FLOORPLAN OPTIONS


 **4**  **2.5**  **2**



Option K-1

Provide Kitchen Upgrade with
1no. 600mm pot drawers, 2no. 800mm overhead cabinets.
1no. laminated MW. provision with pot drawer below.
With 1no. 900mm underbench oven, 1no 900mm hotplate
and 1no. 900mm retractable rangehood.
1no. 900mm laminated open shelf above refrigerator space.

FLOORPLAN OPTIONS


 **4**  **2.5**  **2**

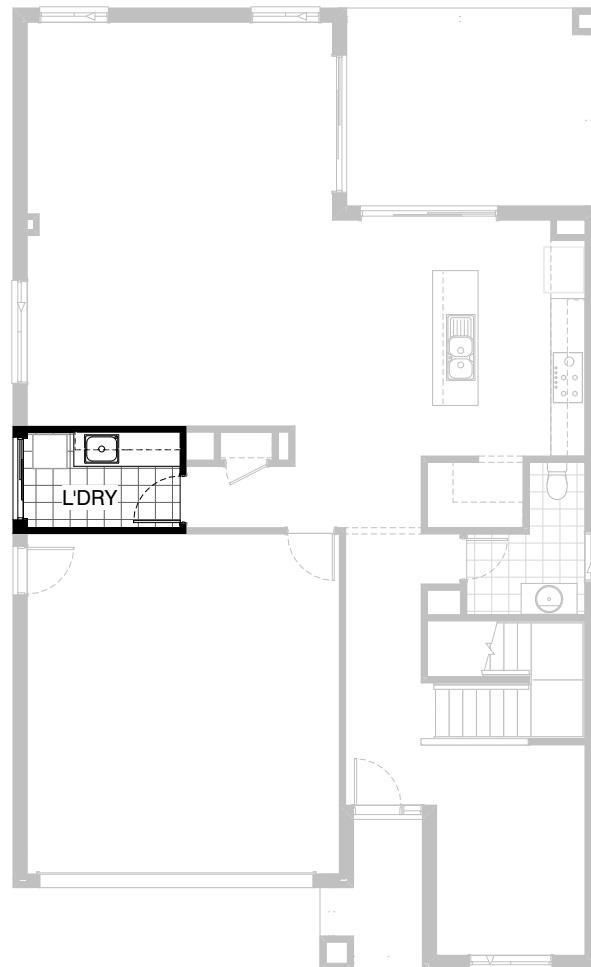


Option K-2

Provide kitchen upgrade with 1no. 900mm laminated hinged door above refrigerator space, 2no. 900mm base cabinets, 1no. 900mm retractable rangehood with 1no. 900mm underbench oven, 1no 900mm hotplate, 1no. laminated mw. provision with pot drawer below, 2no. 900mm overhead cabinets, 1no. 600mm overhead cupboard. provide 1no. 514mm x 2410mm aluminium fixed window. Reduce powder room size and provide 1no. 1027mm x 610mm aluminium sliding window in lieu of standard, adjust WIP shelving to suit and provide 2440mm ceiling to WIP only.

FLOORPLAN OPTIONS

 **4**  **2.5**  **2**






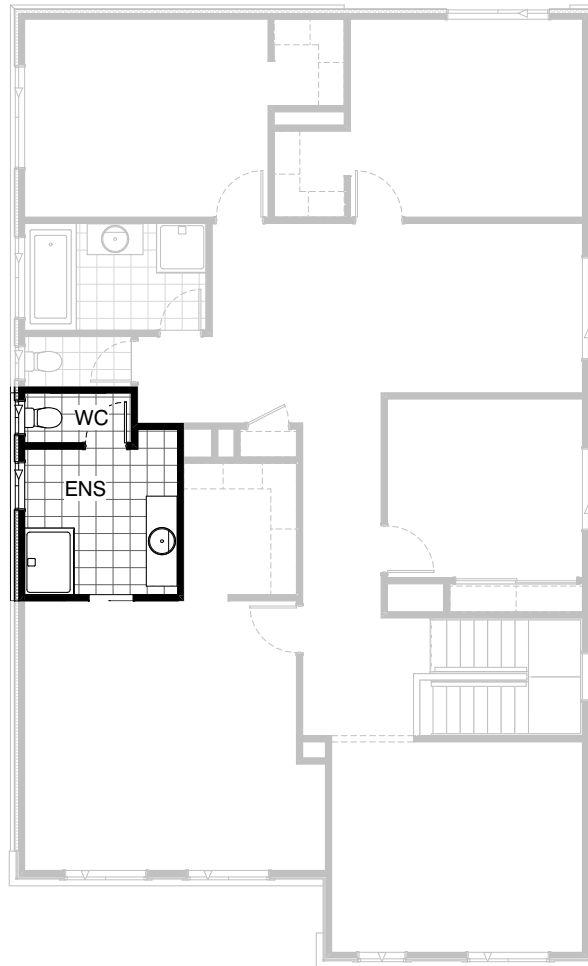
Option LD-1

Provide Laundry Upgrade with s.s. inset trough in 32mm laminated bench top.
2no. 900mm base cabinets and 2no. 900mm overhead cabinets and additional tiled splashback and bench top to suit.

NOTE:- This Option not to be used with Option G-3.

FLOORPLAN OPTIONS

 **4**  **2.5**  **2**






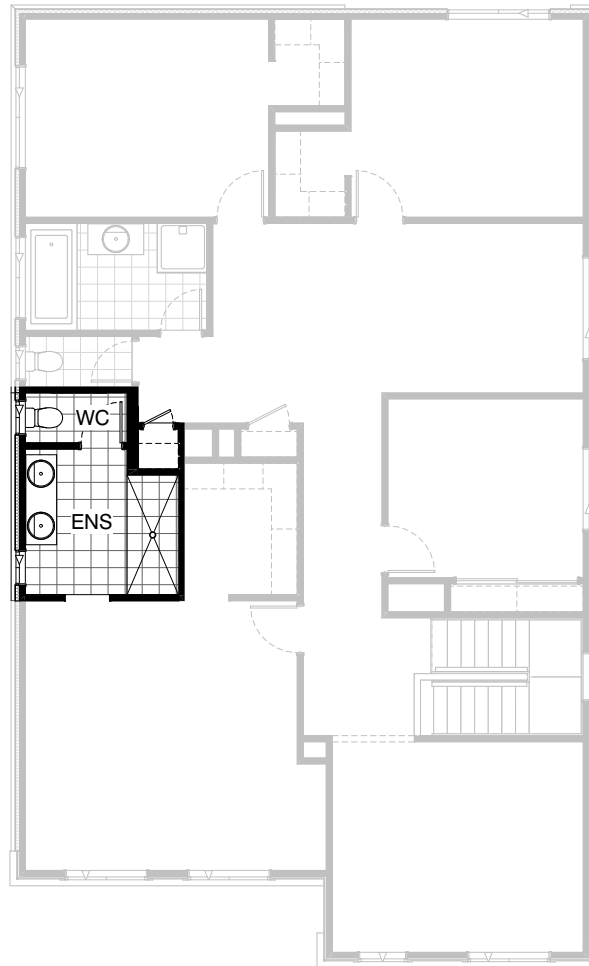
Option ENS-1 FF

Provide Ensuite Upgrade with additional site built plaster lined walls to WC with 1no. 720mm flush panel hinged door and 1no. 1027mm x 610mm aluminium sliding window.

1no. 1200mm x 900mm polymarble shower base.
1no. 1582mm wide vanity unit in lieu of standard
and 1no. 1800mm x 850mm aluminium sliding window in lieu of standard.

FLOORPLAN OPTIONS

 **4**  **2.5**  **2**






Option ENS-2 FF

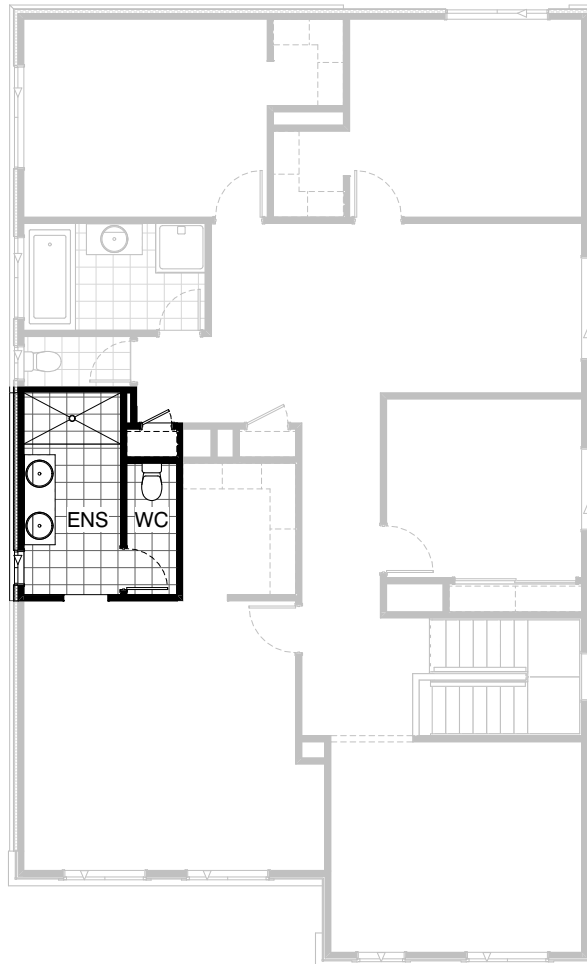
Provide Ensuite Upgrade with 1no. wall to wall tiled shower base, 1no. 1582mm wide vanity unit with 2no. basins in lieu of standard and 1no. 1800mm x 610mm aluminium sliding window in lieu of standard.

Site built plaster lined walls to WC with 1no. 720mm flush panel hinged door and 1no. 1027mm x 610mm aluminium sliding window to suit.

Provide site built plaster lined Linen cupboard with 4no. shelves and 1no. 520mm flush panel hinged door to suit.

FLOORPLAN OPTIONS

 **4**  **2.5**  **2**





Option ENS-3 FF

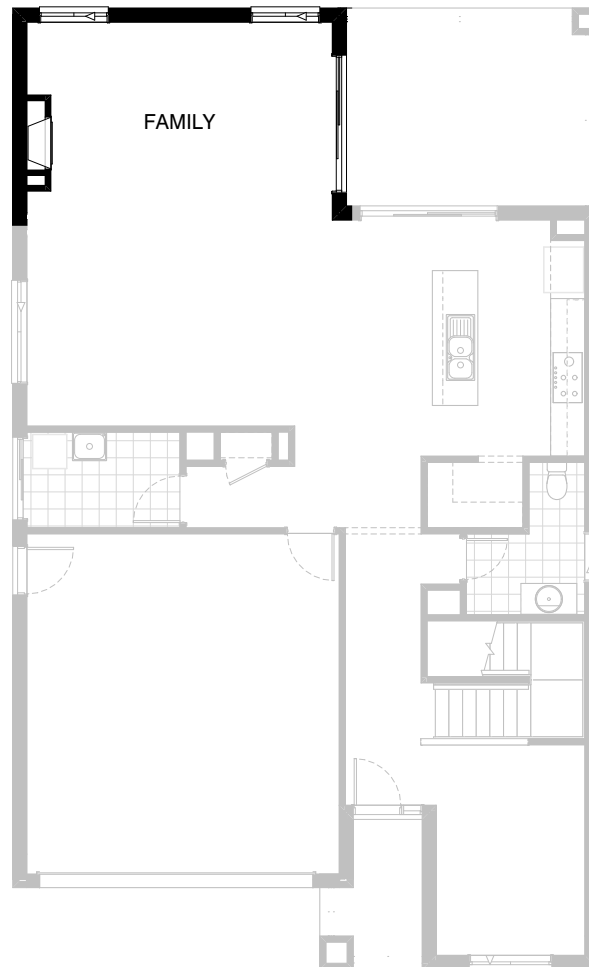
Provide Ensuite Upgrade with 1no. wall to wall tiled shower base, 1no. 1582mm wide vanity unit with 2no. basins in lieu of standard and 1no. 1800mm x 610mm aluminium sliding window in lieu of standard.

Site built plaster lined walls to WC with 1no. 720mm flush panel hinged door to suit.

Provide site built plaster lined Linen cupboard with 4no. shelves and 1no. 520mm flush panel hinged door to suit.

FLOORPLAN OPTIONS



 **4**  **2.5**  **2**

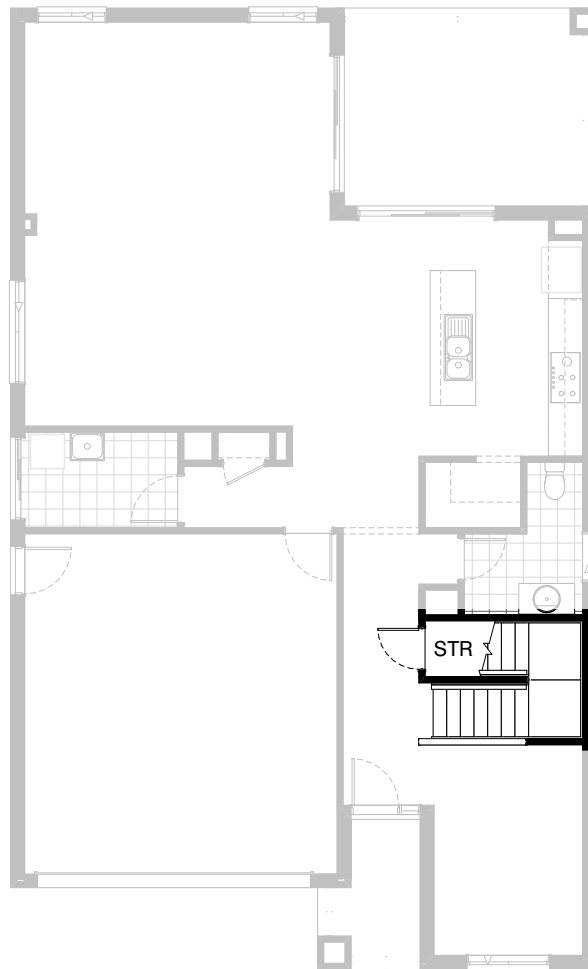


Option IP1-1 GF

Provide Jetmaster 3x series gas fireplace,
400mm off floor level in a 1400mm x 420mm
boxed out plaster wall with a 4 sided black
fascia to Family room rear wall.
Relocate plumbing stack.

FLOORPLAN OPTIONS

 **4**  **2.5**  **2**






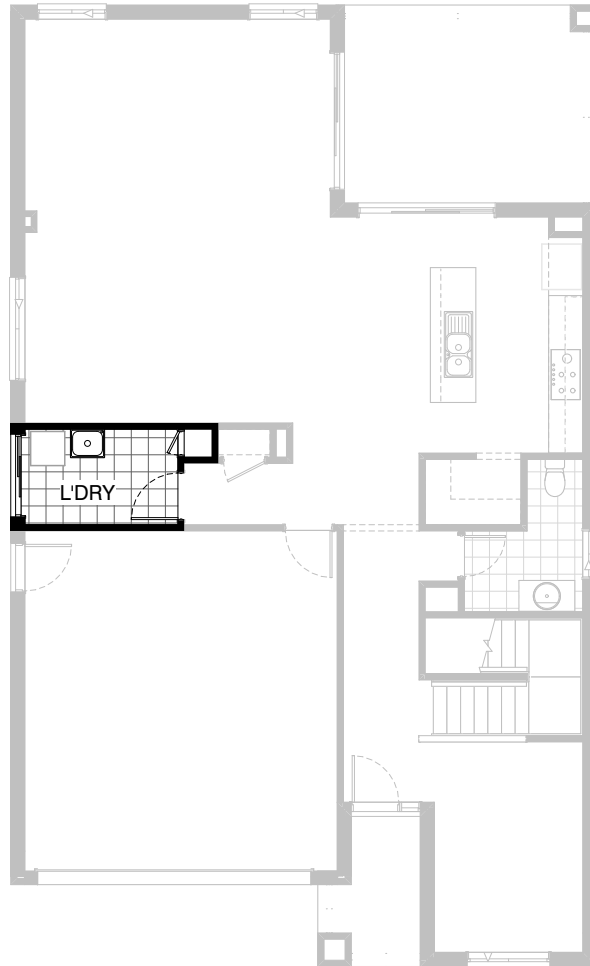
Option IP1-2 GF

Provide Store room below stair including 720mm flush panel hinged door, plaster lined walls and raked plaster ceiling on battens with square set cornice including additional light point.

NOTE: Flooring not included

FLOORPLAN OPTIONS


 **4**  **2.5**  **2**

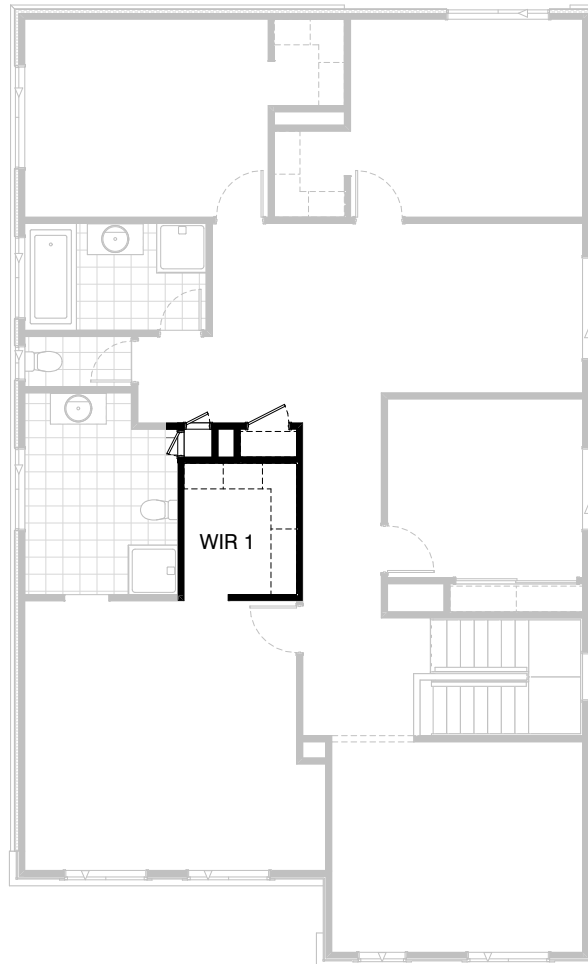


Option IP1-3 GF

Provide Laundry chute.

FLOORPLAN OPTIONS


 **4**  **2.5**  **2**

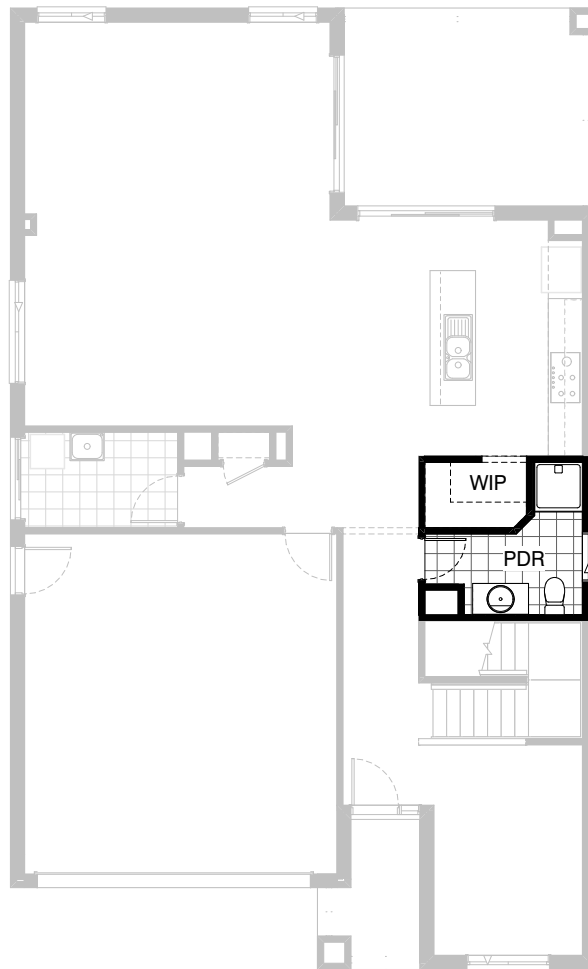


Option IP1-3 FF

Provide Laundry chute.

FLOORPLAN OPTIONS




 **4**  **2.5**  **2**

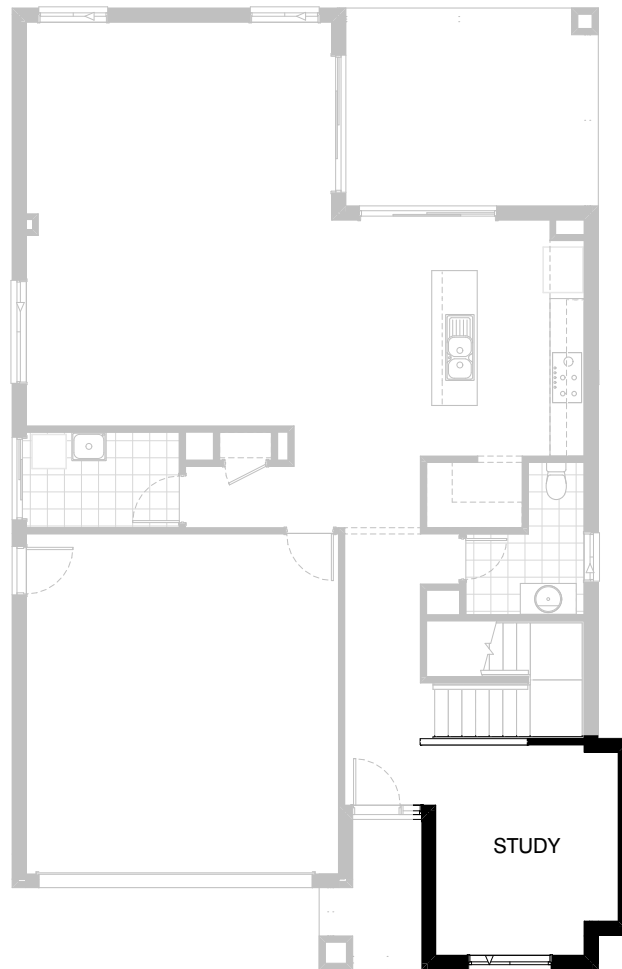


Option IP1-4 GF

Provide Powder Upgrade with additional 900mm x 900mm polymarble shower base. Relocate hinged door, toilet and vanity basin to suit and increase W.I.P by 100mm and angle stud wall to suit.

FLOORPLAN OPTIONS




 **4**  **2.5**  **2**

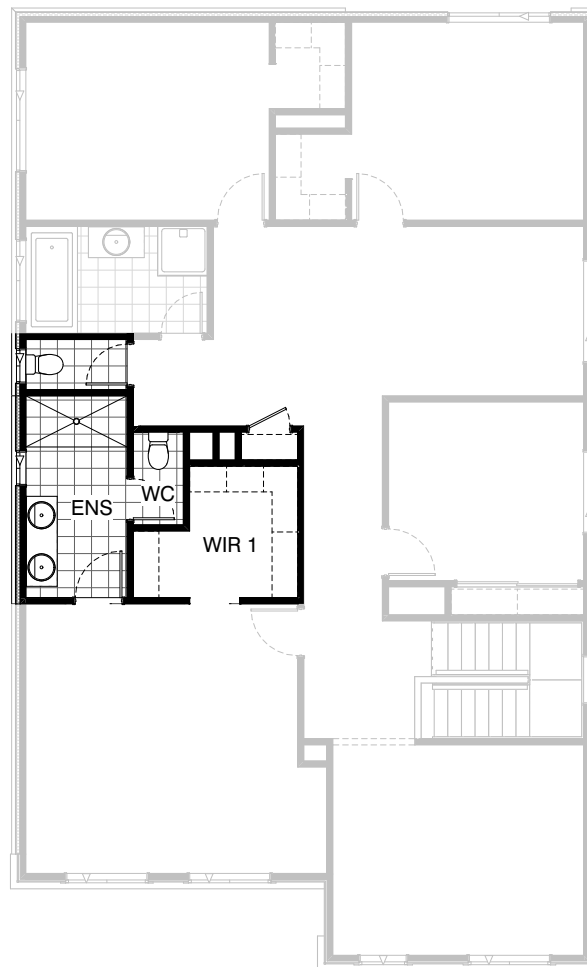


Option IP1-5 GF

Provide Study Option by extending
Study wall width by 600mm with brick
parapet flat roof above.
Increase area by 2.08m²
Increases width by 600mm.

FLOORPLAN OPTIONS

 **4**  **2.5**  **2**



Option IP1-6 FF




Provide Ensuite and W.I.R Upgrade including reduce Ensuite and WC by 100mm and reduce part W.I.R by 80mm to provide separate WC to Ensuite.

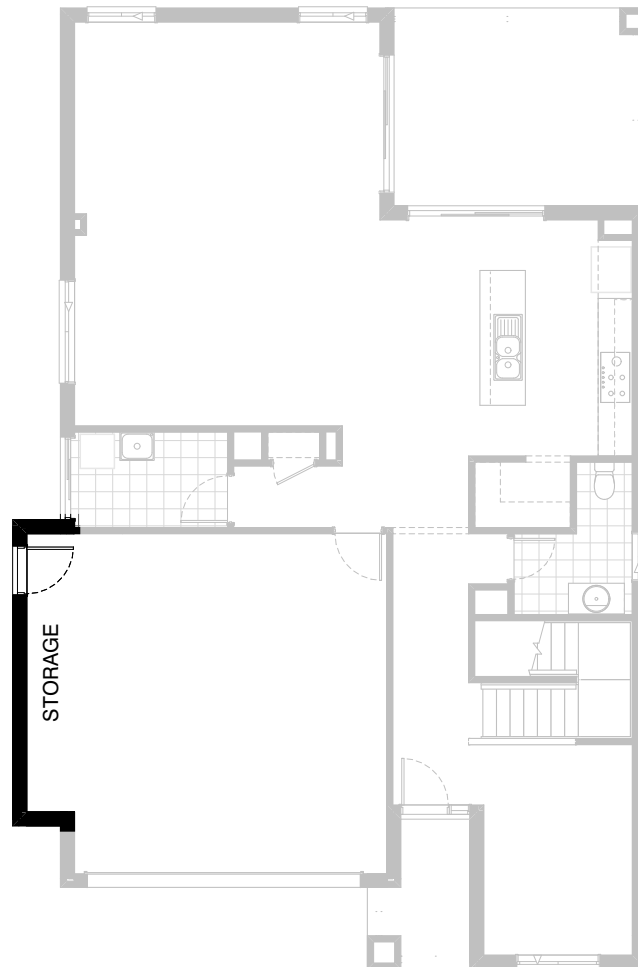
Provide 1582mm wide vanity unit with 2no. basins and 1800mm x 900mm tiled shower base.

Provide 820mm flush panel hinged door to Ensuite in lieu of standard opening and 1200mm x 610mm aluminium sliding window in lieu of 1200mm x 1450 window.

Provide additional 450mm shelf and hanging rail to W.I.R as required.

FLOORPLAN OPTIONS

 **4**  **2.5**  **2**

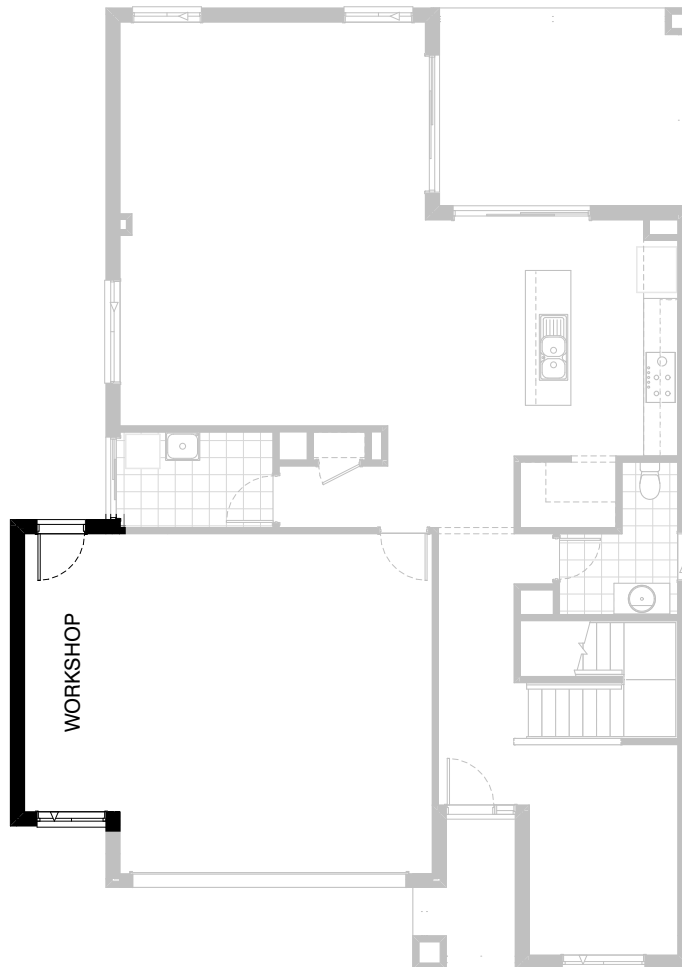


Option G-1

Provide extension to Garage to create additional Storage area.
Provide pitched roof and lightweight cladding ('Scyon Stria') above.
Increases area by 4.53m².
Increases width by 840mm.

FLOORPLAN OPTIONS



 **4**  **2.5**  **2**

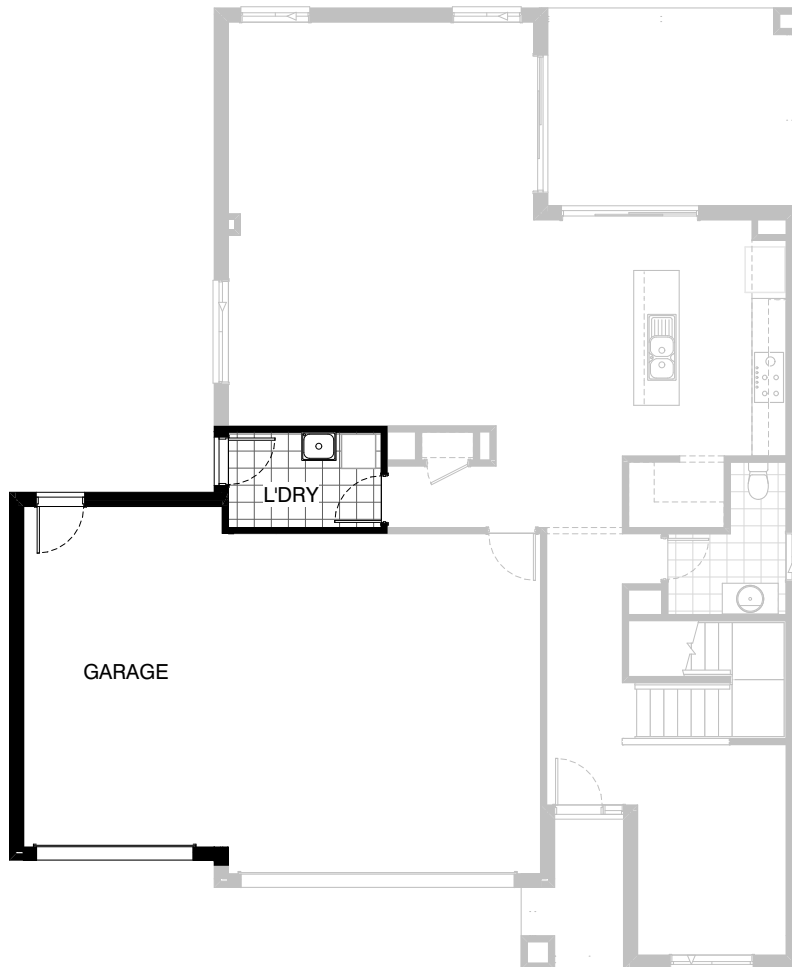


Option G-2

Provide extension to Garage to create Workshop area including additional 2057 x 1210 feature aluminium awning window.
Provide pitched roof and lightweight cladding ('Scyon Stria') above.
Increases area by 9.05m².
Increases width by 1680mm.

FLOORPLAN OPTIONS

 **4**  **2.5**  **2**






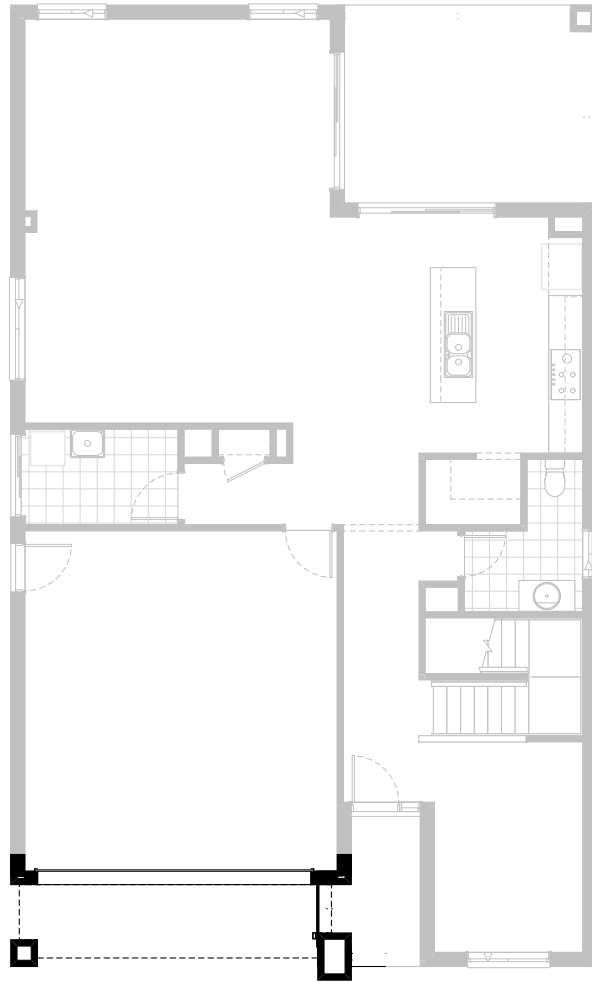
Option G-3

Provide triple car Garage including additional Garage door as per colour selection.
Provide pitched roof and lightweight cladding ('Scyon Stria') above.
Provide additional 1 no. 2105mm x 850mm external hinged door in lieu of standard 2110mm x 1450mm aluminium sliding door to Laundry.
Increases area by 23.29m².
Increases width by 3600mm.

NOTE:- This Option not to be used with Option LD-1

FLOORPLAN OPTIONS




 **4**  **2.5**  **2**

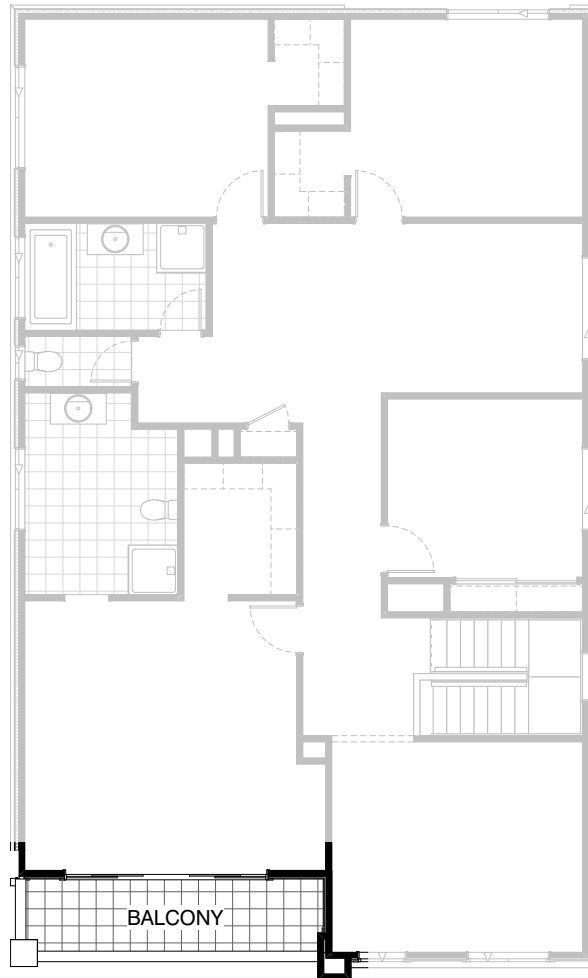


Option BA-1 GF

Provide Balcony Option.

FLOORPLAN OPTIONS

 **4**  **2.5**  **2**



Option BA-1 FF

Provide Balcony Option to Bed 1.